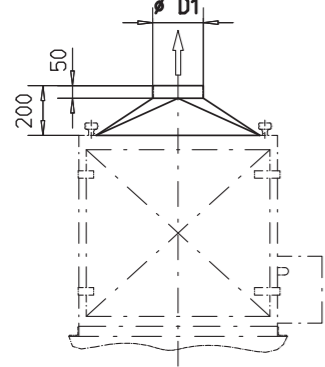
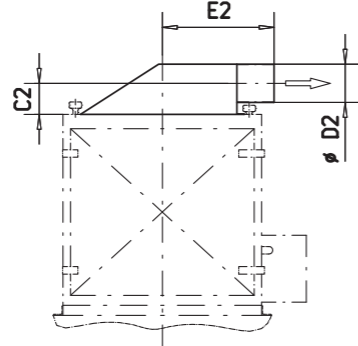


1 Übergangsstück
Transition piece
Pièce de raccordement

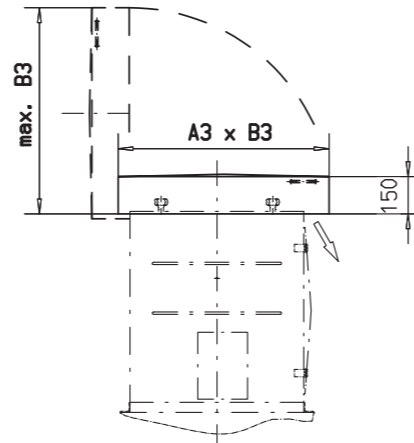


2 Absaughaube
Hood
Hotte d'aspiration

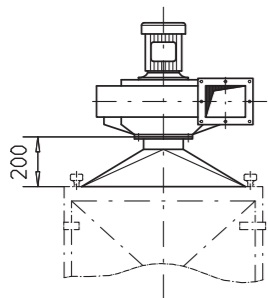
Reingasaustritt auf Wunsch links oder hinten
Clean gas outlet on request to the left or rear
Sortie gaz épuré sur demande à gauche ou au revers



3 Wetterhaube
Weather cowl
Capot contre intempéries

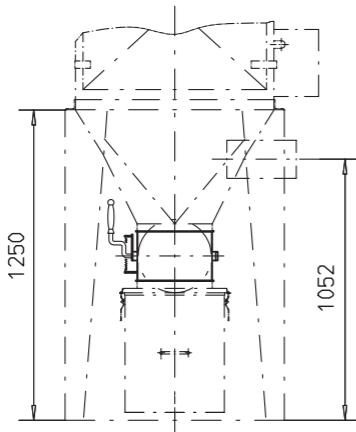


4 Ventilatoranbau
Fan support
Support de ventilateur

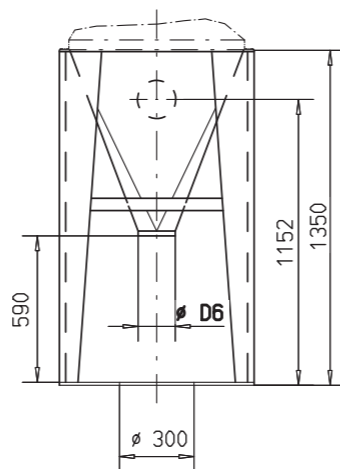


Ventilatoraten siehe Register 9
Fan data see chapter 9
Caractéristiques des ventilateurs voir registre 9

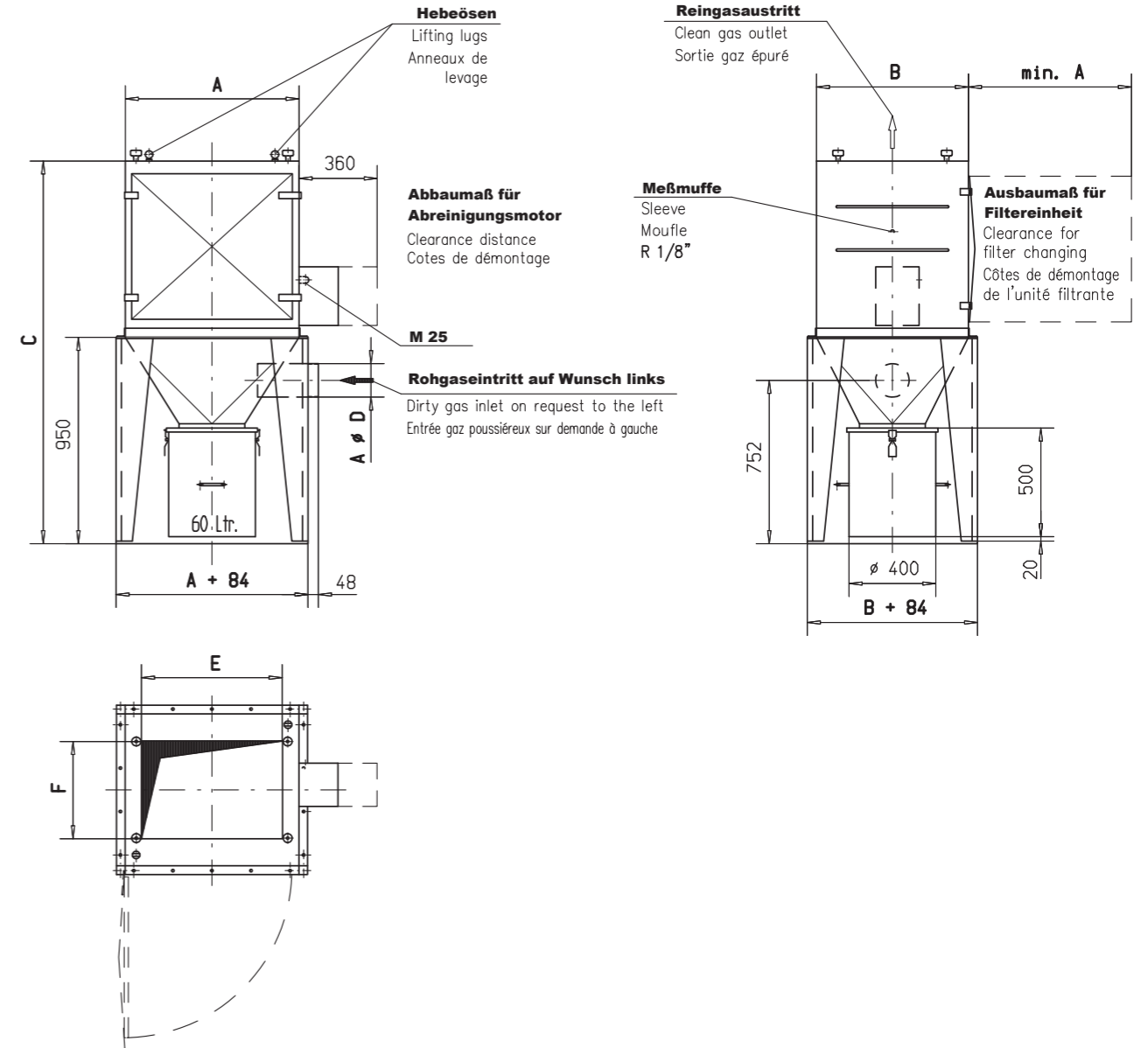
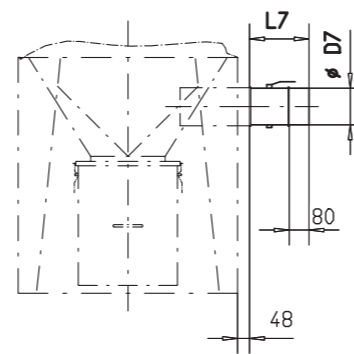
5 Absperrklappe Ø 300
Butterfly valve Ø 300
Registre de fermeture Ø 300



6 Staubtragstrichter
Dust hopper
Trémie



7 Drosselklappe
Damper
Vanne papillon



Weiteres Zubehör /Other accessories/Autres accessoires:

s. Reg. 9 + 10 /see chapter 9 + 10/voir registre 9 + 10

* Steuergerät /Control unit/Coffret de commande

* Differenzdruck-Meßgerät /Differential press. instrument/Appareil de mesure

* Flexibler Schlauch /Flexible duct /Tuyau flexible

* Zellenradschleuse /Rotary valve/Sas rotatif

* Doppelpendelklappe /Double pendulum valve/Clapet pendulaire double

* Gabelstaplertransport /Transportation channels/Guides pour chariot élévateur

* Absperrkl. staubdicht /Butterfly valve dustproof/Registre de fermeture étanche aux poussières

Alle Stutzen lieferbar mit /Connecting piece available with/
Pièce de raccordement livrable avec:

Flansch nach /Flange as per /Bride conforme à: DIN 24154/2

oder Bördel /or clamping flange /ou bride bordée

s. Reg. 9 / see chapter 9 / voir registre 9

Konstruktionsänderungen vorbehalten

Dimensions subject to alterations !

Côtes données sous réserve de modifications !

| Filtertyp Type Type | Gewicht Weight Poids [kg] | Ø D1 [mm] | Gewicht Weight Poids [kg] | C 2 [mm] | Ø D2 [mm] | E 2 [mm] | Gewicht Weight Poids [kg] | A 3 [mm] | B 3 [mm] | Gewicht Weight Poids [kg] | Filtertyp Type Type | Filterfläche Filter area Surface filtrante [m²] | Anzahl Filtertaschen Nr. filter pads Nb. des poches | Gewicht Weight Poids [kg] | A [mm] | B [mm] | C [mm] | Ø D [mm] | E [mm] | F [mm] | max. Volumenstrom max. flow rate max débit d'air [m³/h] | |
|---------------------------|------------------------------------|--------------|------------------------------------|-------------|--------------|-------------|------------------------------------|-------------|-------------|------------------------------------|---------------------------|--|--|------------------------------------|-----------|-----------|-----------|-------------|-----------|-----------|--|---|
| AM 063 | 7 | 200 | 6 | 125 | 140 | 350 | 21 | 613 | 750 | 20 | AM 063 | 6 | 13 | 140 | 600 | 600 | 1660 | 140 | 450 | 450 | x - - - - | |
| AM 133 | 11 | 200 | 8 | 125 | 160 | 450 | 26 | 813 | 850 | 20 | AM 133 | 13 | 19 | 190 | 800 | 700 | 1760 | 160 | 650 | 550 | - x - - - | |
| AM 233 | 18 | 250 | 14 | 175 | 250 | 500 | 33 | 913 | 1140 | 25 | AM 233 | 23 | 22 | 255 | 900 | 990 | 1760 | 250 | 750 | 840 | - - - x - - | |
| AM 303 | 19 | 250 | 15 | 175 | 250 | 550 | 35 | 1013 | 1095 | 25 | AM 303 | 30 | 25 | 270 | 1000 | 945 | 1916 | 250 | 850 | 795 | - - - - x - - | |
| AM 453 | 19 | 315 | 15 | 200 | 315 | 550 | 35 | 1013 | 1095 | 25 | AM 453 | 45 | 25 | 320 | 1000 | 945 | 2340 | 315 | 850 | 795 | - - - - - x | |
| | | | | | | | | | | | | | | | | | | | | | | 800 1500 1800 2400 3000 4000 |